



Webbs
Helping people move since 1994

Paget Rise | Rugeley | WS15 3EF

£250,000



Summary

** NO CHAIN ** POPULAR VILLAGE LOCATION ** IDEAL FOR FIRST TIME BUYERS ** FIRST FLOOR APARTMENT ** RECENTLY RENOVATED ** TWO BEDROOMS ** LIVING ROOM ** MODERN FITTED KITCHEN ** DECEPTIVELY SPACIOUS ** VIEWING ADVISED **

WEBBS ESTATE AGENTS are pleased to market this beautifully presented two-bedroom first floor apartment which offers an excellent opportunity for first time buyers, downsizers or investors alike.

Situated within the highly desirable village of Abbots Bromley. Recently modernised throughout, the property combines stylish accommodation with a sought-after location, providing easy access to local amenities, countryside walks and commuter links.

Internally, the accommodation briefly comprises a welcoming entrance hallway, a bright and spacious living room, a modern fitted kitchen, two well-proportioned bedrooms and a contemporary bathroom suite. The property has been tastefully updated to create a move-in ready home with a fresh and modern finish throughout.

Key Features

- NO CHAIN
- IDEAL FOR FIRST TIME BUYERS
- RECENTLY RENOVATED
- LIVING ROOM
- DECEPTIVELY SPACIOUS
- POPULAR VILLAGE LOCATION
- FIRST FLOOR APARTMENT
- TWO BEDROOMS
- MODERN FITTED KITCHEN
- VIEWING ADVISED

Rooms and Dimensions

Hallway

Living Room

16'6" x 10'11" (5.03 x 3.33)

Kitchen

9'6" x 10'2" (2.91 x 3.12)

Bedroom 1

12'3" (3.74)

Bedroom 2

10'3" x 11'10" (3.13 x 3.61)

Bathroom

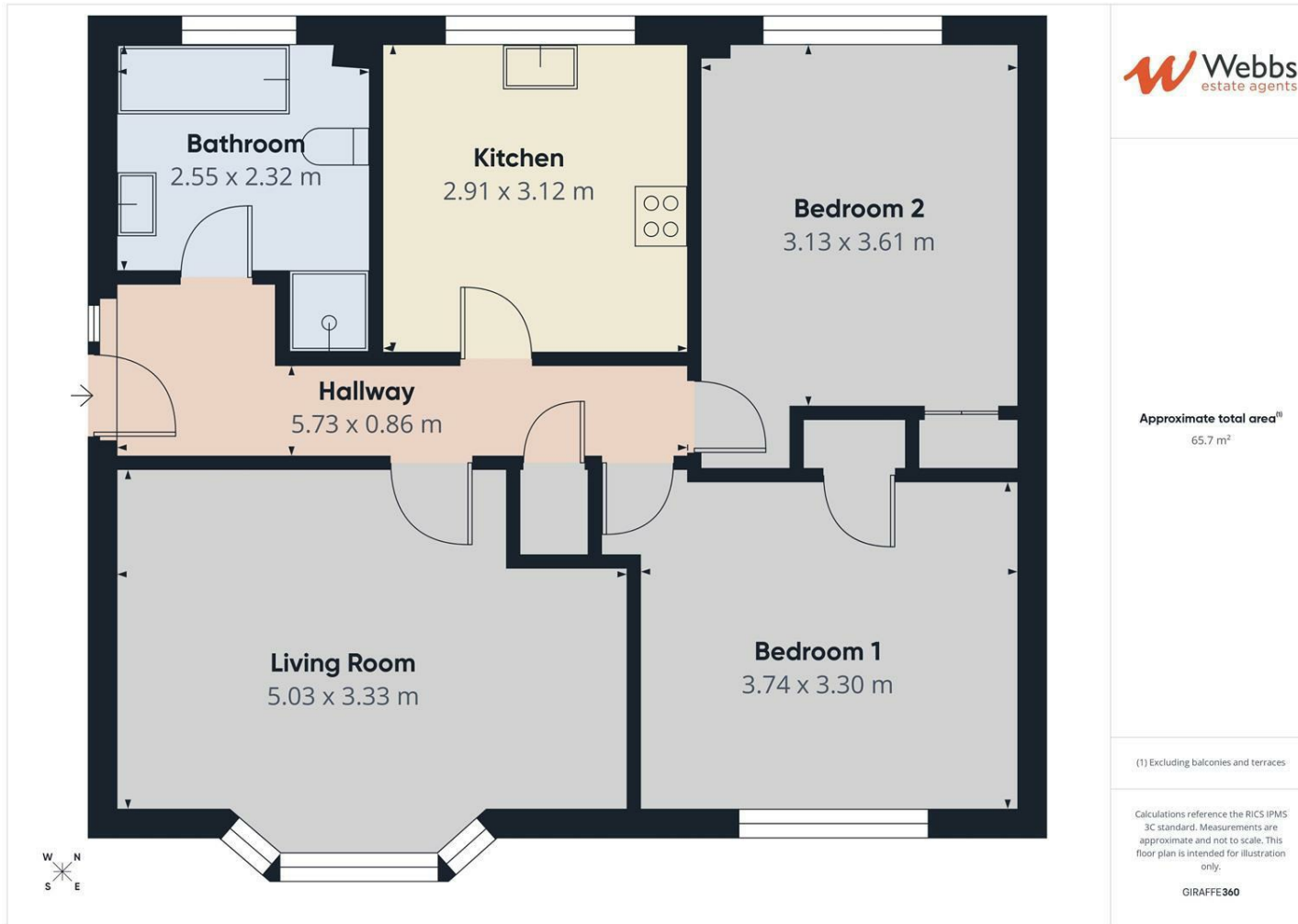
8'4" x 7'7" (2.55 x 2.32)

Identification Checks (R)

AGENTS NOTES







Webbs Estate Agents - endeavour to maintain accurate depictions of properties in Virtual Tours, Floor Plans and descriptions, however, these are intended only as a guide and purchasers must satisfy themselves by personal inspection.

